

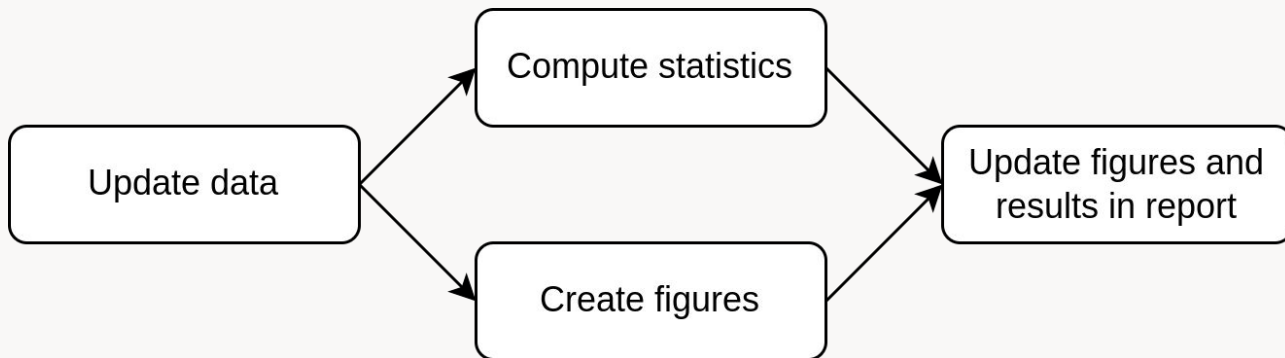
# The {episoap} R package

Hugo Gruson, Epiverse-TRACE

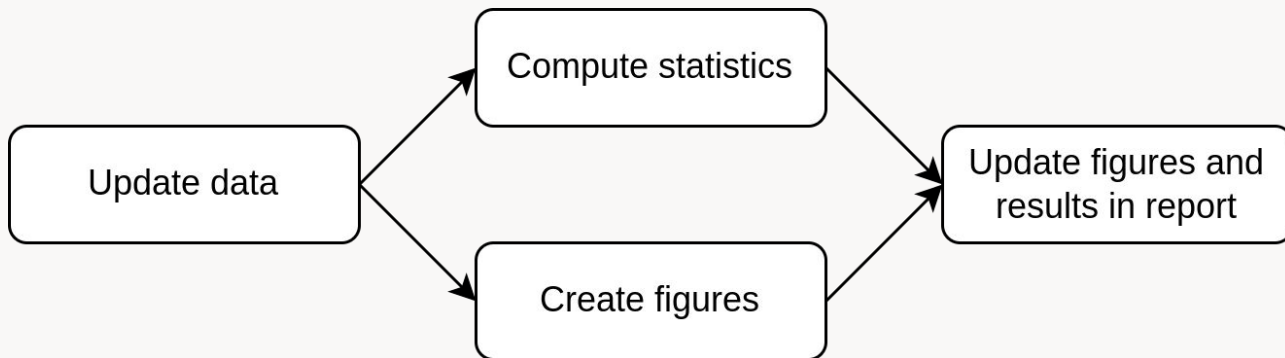
{episoap} : **Store of Automated Pipelines**

Automated reports for common tasks in epidemiology

Building reports manually:



Building reports manually:



**✘** Tedious and error-prone

**Literate programming:** weave text and code generating new results and figures in a single document.

- Automated
- Figures and statistics are generated on-the-fly:  
always up-to-date
- No need to go back-and-forth between applications

## R Markdown

This is an R Markdown document. Markdown is a simple formatting syntax for authoring HTML, PDF, and MS Word documents. For more details on using R Markdown see <http://rmarkdown.rstudio.com>.

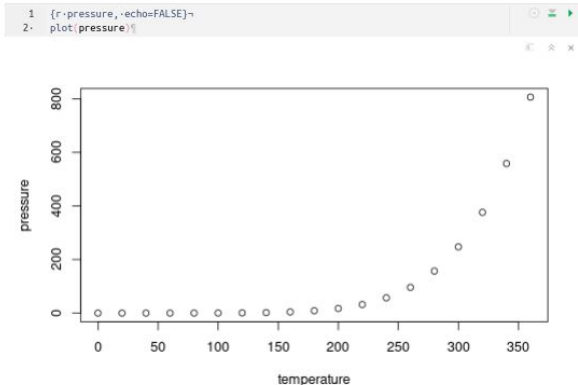
When you click the **Knit** button a document will be generated that includes both content as well as the output of any embedded R code chunks within the document. You can embed an R code chunk like this:

```
1 {r-cars}~
2- summary(cars)%
```

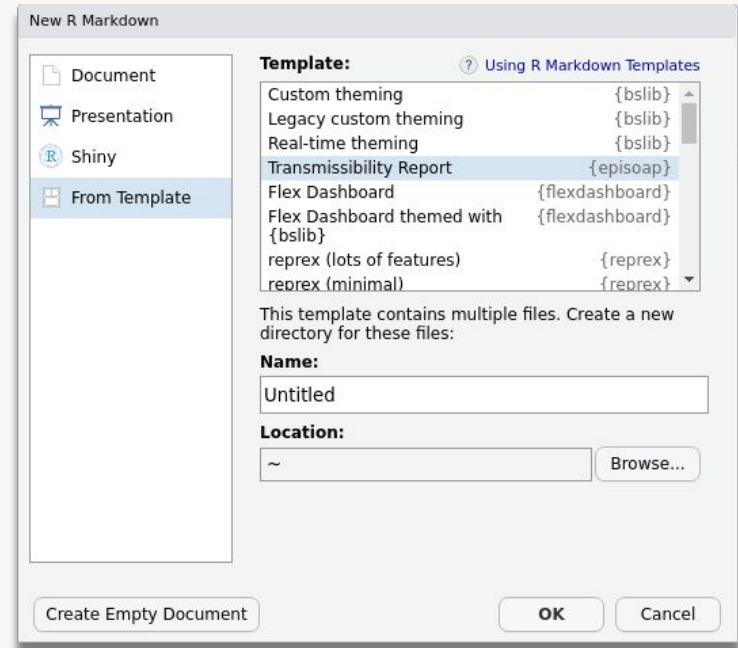
speed	dist
Min. : 4.0	Min. : 2.00
1st Qu.:12.0	1st Qu.: 26.00
Median :15.0	Median : 36.00
Mean :15.4	Mean : 42.98
3rd Qu.:19.0	3rd Qu.: 56.00
Max. :25.0	Max. :120.00

## Including Plots

You can also embed plots, for example:



- Use the graphical interface or the command line
- Render directly or customize the template



# Live demo

Creation of reports

This is not a new concept!



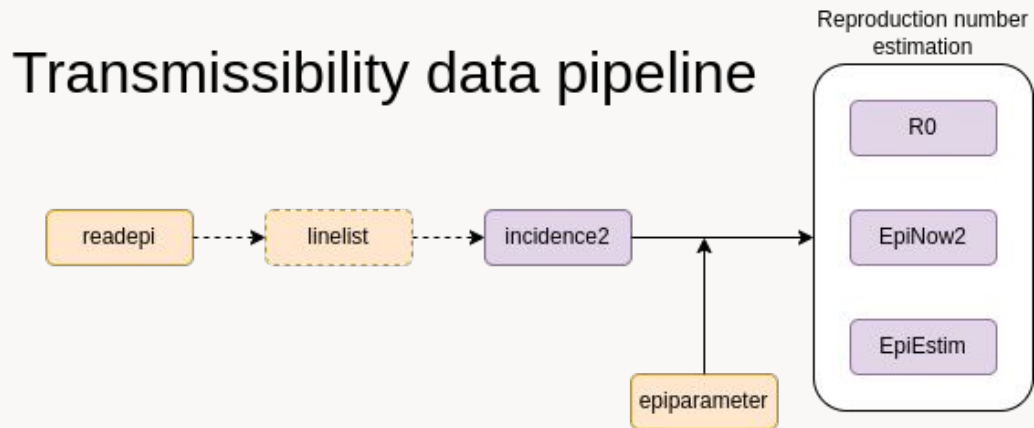
[{sitrep} package by applied epi](#)

How does {episoap} differ from similar packages?

Not a replacement but an alternative!



- Provide an easy introduction to **Epiverse packages**, and integrate them in the ecosystem
- Easily switch between alternative packages for a single task

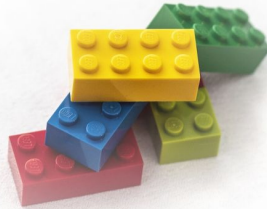


# Live demo

Customization of reports & use of parameters

## Future directions

- Addition of new pipelines, such as case-fatality ratio pipeline
- New package to build any custom pipeline from custom building blocks



# Questions / Feedback